



2 Columbus Street
St. Helier, Jersey, JE2 3YL

£499,000



2 Columbus Street

St. Helier, Jersey, JE2 3YL

Located in the heart of St Helier, this beautifully presented three-bedroom property has been newly renovated to an exceptional standard throughout. Boasting a high-specification interior finish, the home seamlessly blends contemporary style with practical living.

Ideal for first-time buyers or as a solid investment opportunity, the property offers well-proportioned living spaces, modern fittings, and quality craftsmanship throughout. To the rear, you'll find a private, low-maintenance outdoor area – perfect for relaxed entertaining or alfresco dining.

With its central location providing easy access to local amenities, schools, and transport links, this turn-key home presents a rare opportunity to acquire a stylish residence in one of Jersey's most sought-after urban areas.

Early viewing is highly recommended by the vendors sole agent.

Lounge
12'5 x 12'1 (3.78m x 3.68m)

Kitchen
10'2 x 9'11 (3.10m x 3.02m)

Bathroom
9'3 x 5'6 (2.82m x 1.68m)

First floor

Bedroom 1
12'3 x 11'9 (3.73m x 3.58m)

Bedroom 2
10'4 x 8'7 (3.15m x 2.62m)

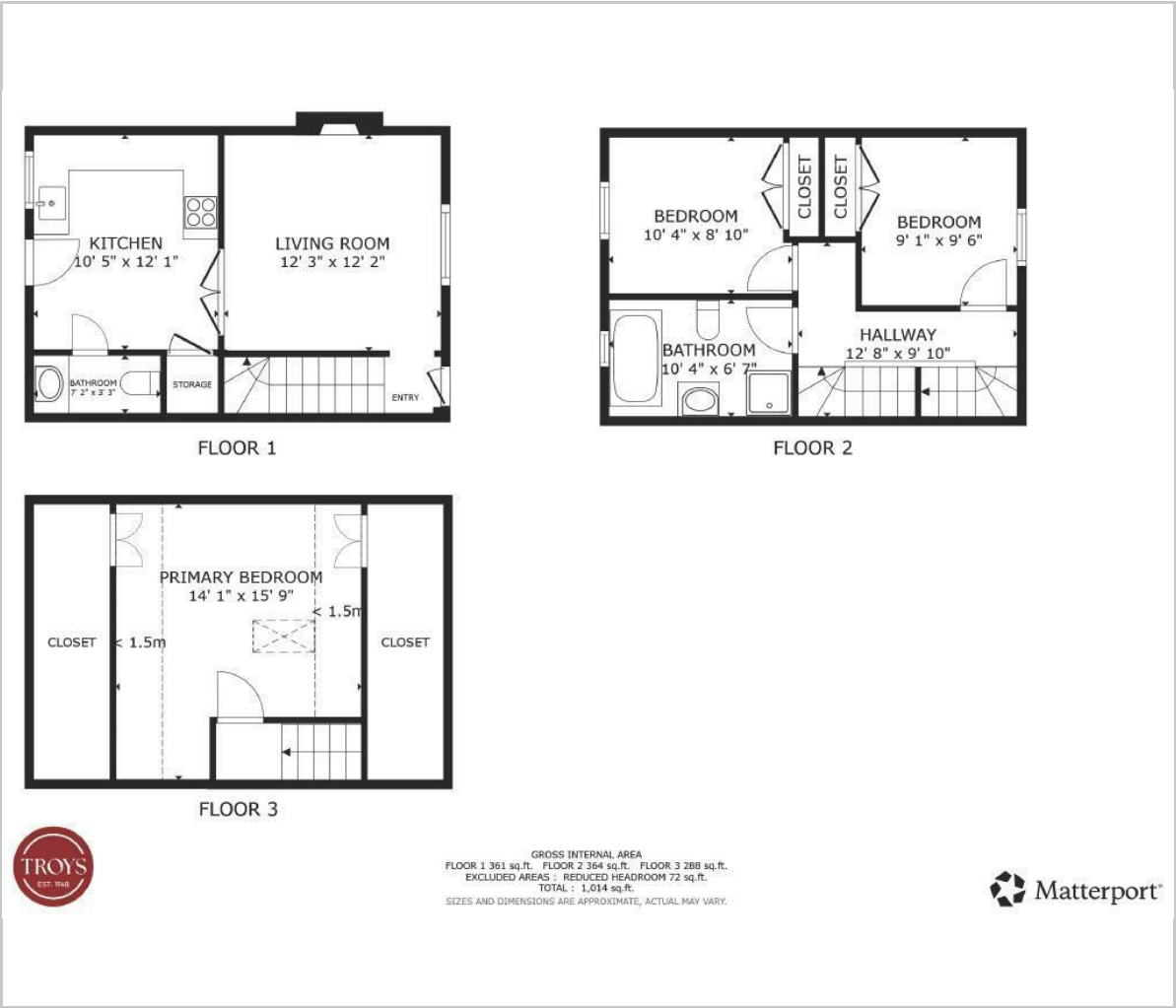




Bedroom 3
Loft
Services
Rear patio



Floor Plan



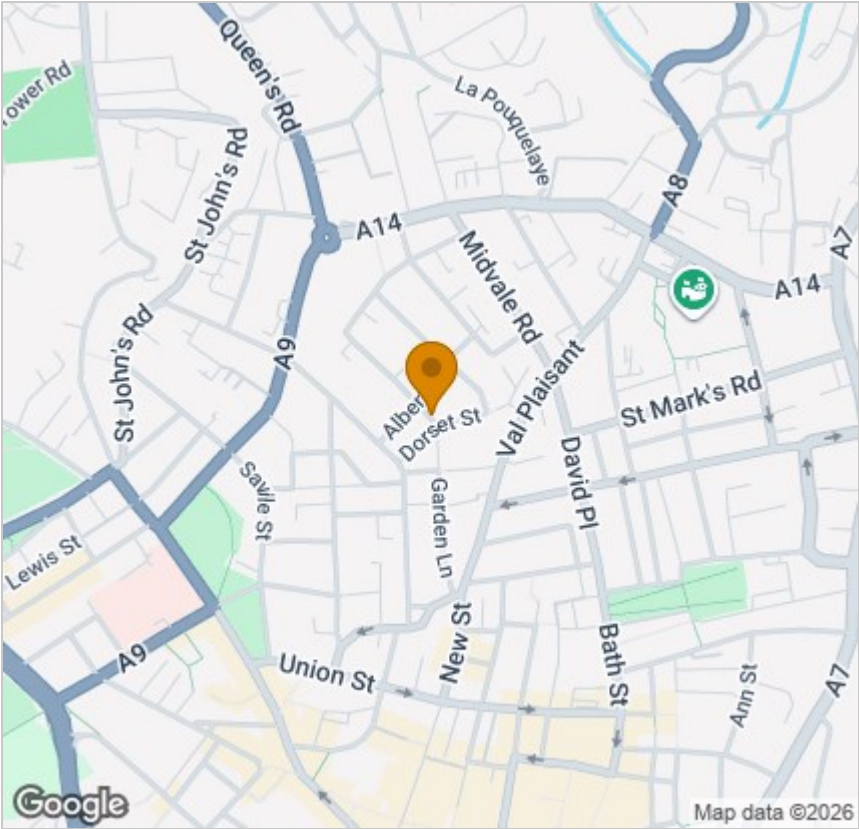
Viewing

Please contact our Troys Estate Agency Ltd Office on 01534 607070 if you wish to arrange a viewing appointment for this property or require further information.

These particulars, whilst believed to be accurate are set out as a general outline only for guidance and do not constitute any part of an offer or contract. Intending purchasers should not rely on them as statements of representation of fact, but must satisfy themselves by inspection or otherwise as to their accuracy. No person in this firms employment has the authority to make or give any representation or warranty in respect of the property.

10 Sand Street, St Helier, Jersey, JE2 3QF
Tel: 01534 607070 Email: duty@troysjsy.com

Area Map



Energy Efficiency Graph

